




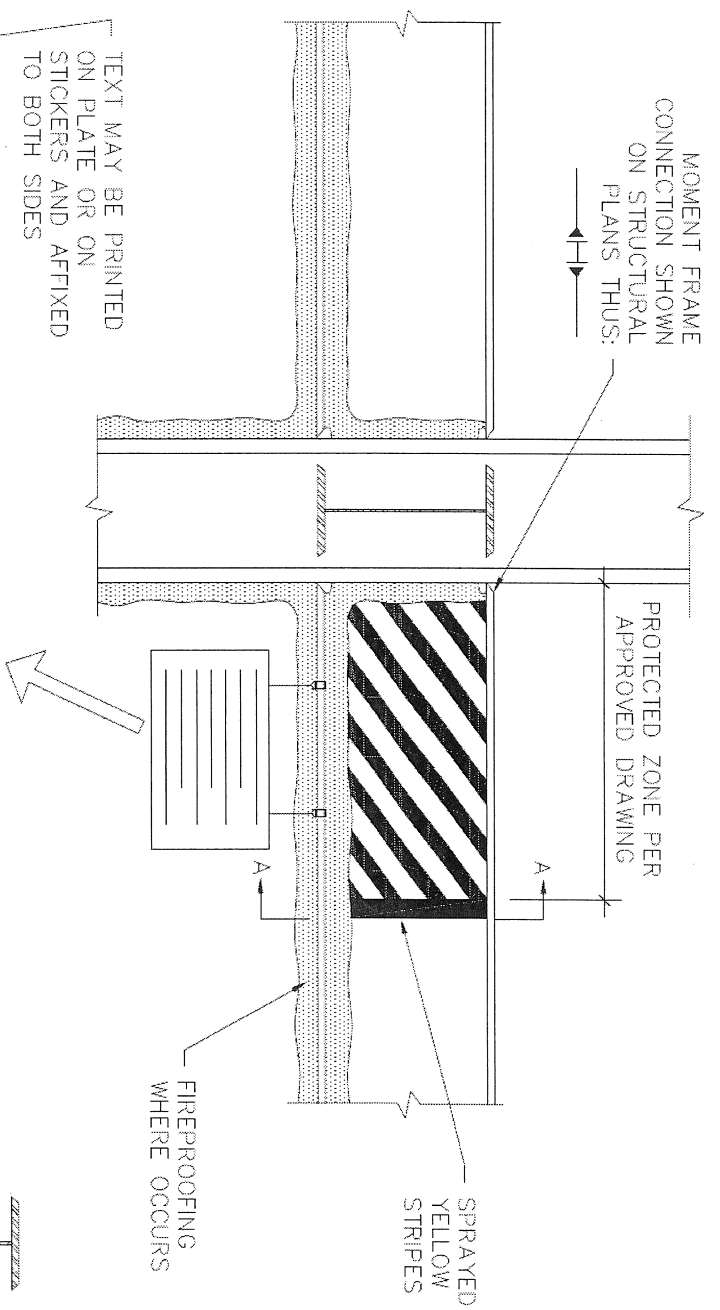
**City of Milpitas
Building and Safety Department**

Mailing Address: 455 East Calaveras Boulevard, Milpitas, California
95035-5479 – Tel. 408.586.3240, Fax 408.586.3285
www.ci.milpitas.ca.gov

**POSTING OF PROTECTED ZONE
IN INTERMEDIATE AND SPECIAL
STEEL MOMENT-RESISTING
FRAMES**

Policy:	BDP-BLG13
Effective Date:	11/12/2009
Proposed by:	OC
Last Reviewed/ Revised:	3/24/2014
Revised by:	BYC/LS
Approved By: Gary King Acting Chief Building Official	
	

Pursuance to sections D1.3, E2.5c, E3.5c, F2.5c, F3.5c & F4.5c of ANSI/AISC 341-10, Seismic Provisions for Structural Steel Buildings, posting at the protected zone of special, intermediate moment-resisting steel frames, special concentrically braced frames (SCBF), eccentrically braced frames (EBF) and buckling restrained braced frames (BRBF) is enforced. See attached sketch 1 for details for moment frames and refer to corresponding sections in ANSI/AISC 341-10 for SCBF, EBF & BRBF.

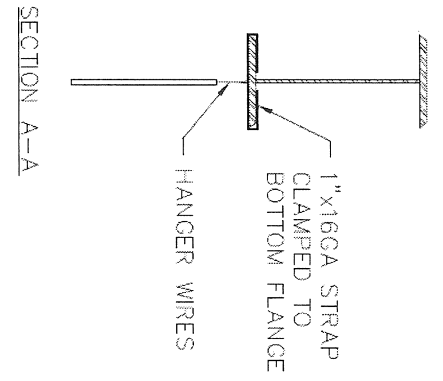


NOTICE:

CONNECTIONS THAT PENETRATE STEEL SURFACE, INCLUDING BOLTS, HOLES, SCREWS, SHOT PINS, WELDS, AND TACK WELDS (PERMANENT OR TEMPORARY) ARE PROHIBITED WITHIN THE REGION SHOWN WITH YELLOW STRIPES. IT IS A VIOLATION OF THE CODE TO MAKE SUCH CONNECTIONS IN THIS REGION.

BEFORE INSTALLING
READ THIS NOTICE:

POSTED (INSERT DATE)
DO NOT REMOVE THIS TAG



REV.	DATE	BY:	SCALE:
			N.T.S.
			DATE:
			NOV 2009
			DRAWN BY:
			BYC
			REVIEWED BY:
			KJ/LS/GC/GA/BK

City of Milpitas
 Building & Safety Department
**POLICY FOR POSTING OF PROTECTED ZONE IN
 INTERMEDIATE AND SPECIAL STEEL MOMENT-RESISTING FRAMES**

SHEET
1
 OF 1 SHEETS