



City of Milpitas

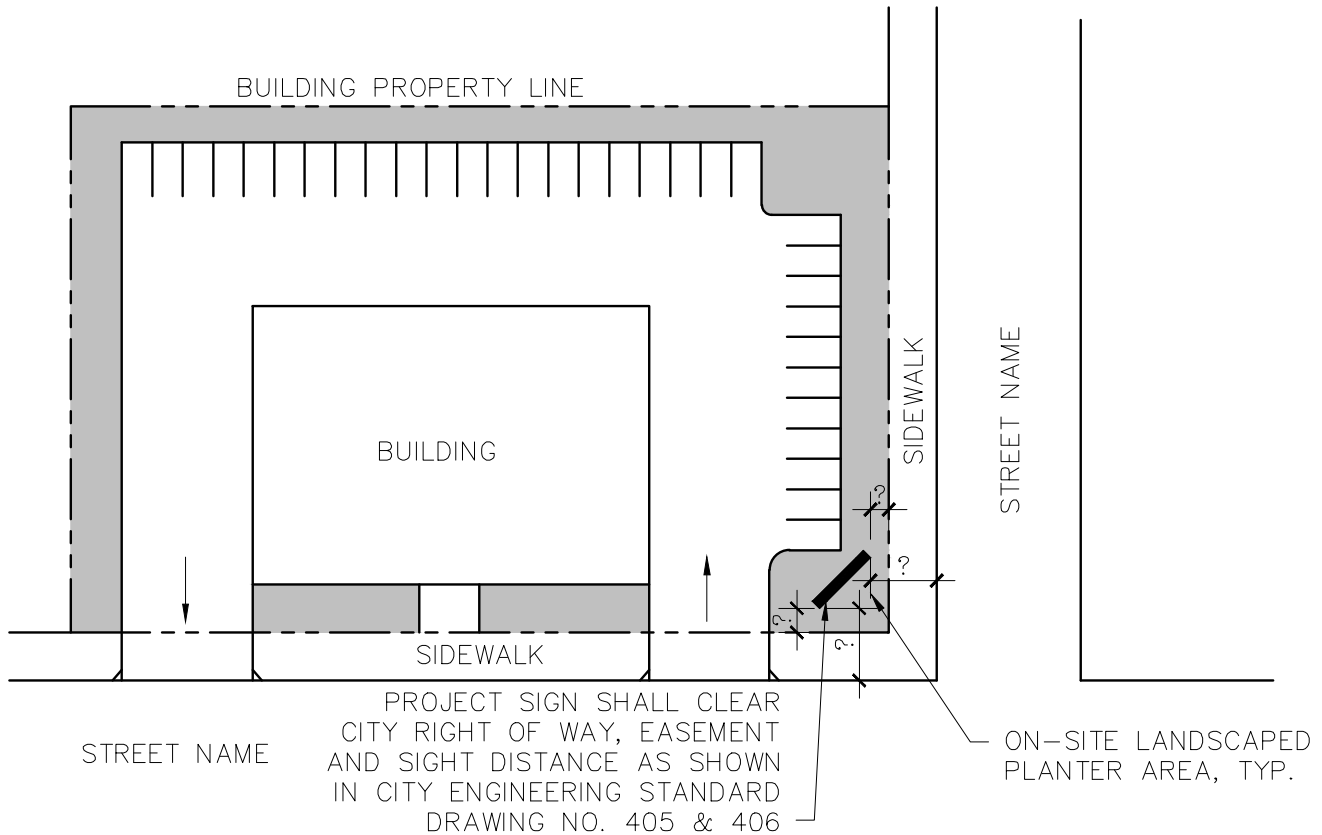
Building & Safety Department

DESIGN GUIDELINES FOR MONUMENT SIGNS



455 E. Calaveras Blvd.
Milpitas, CA 95035
408-586-3240
www.ci.milpitas.ca.gov

MAR 2017



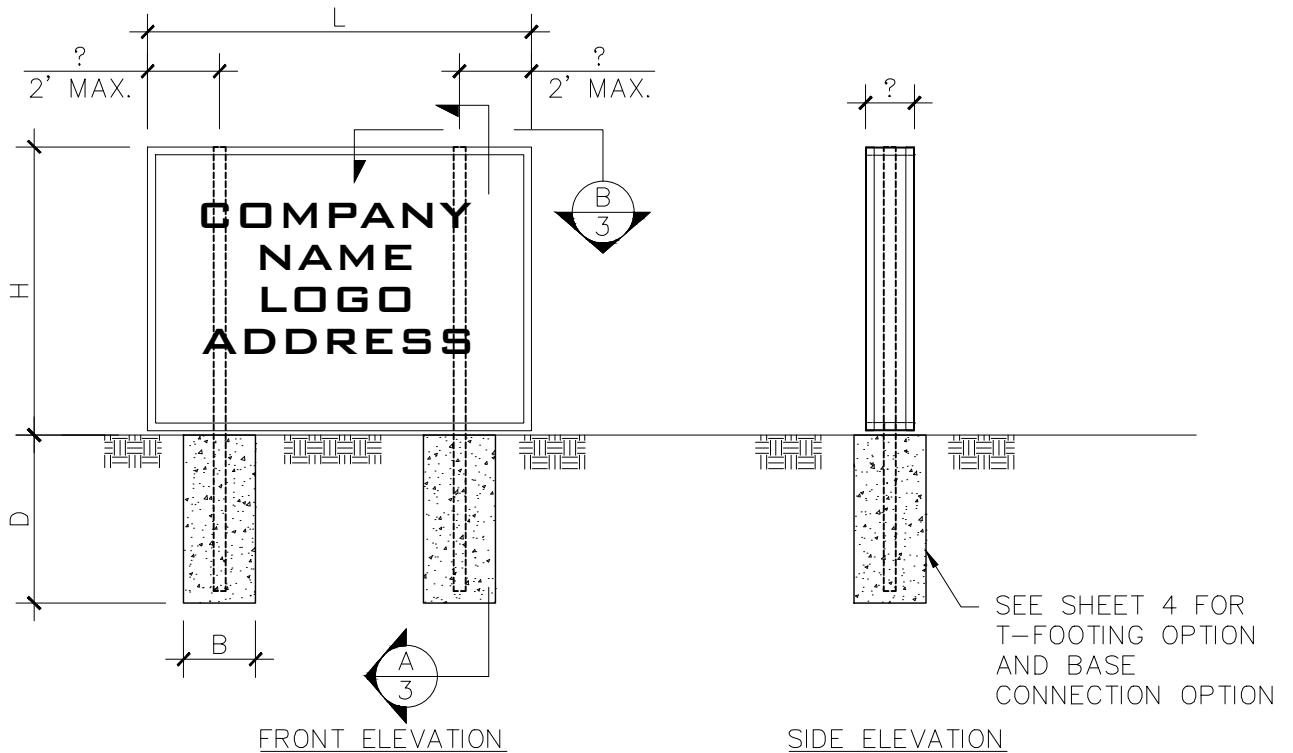
NOTE:

1. PROVIDE PROJECT INFORMATION SUCH AS THE SCOPE OF WORK; THE STREET ADDRESS; THE NAME, ADDRESS AND TELEPHONE NUMBER OF THE PERSON WHO PREPARED THE PLANS.
2. SHOW LOCATION OF THE PROPOSED MONUMENT SIGN, SETBACK DIMENSIONS TO THE PROPERTY LINE, ANY ADJACENT BUILDING OR RELEVANT SITE FEATURES, SUCH AS FIRE HYDRANTS, LIGHT POSTS, ETC.
3. SIGNS EXCEEDING 6'-0" TALL SHALL BE CONSIDERED BY THE PLANNING COMMISSION. SIGNS 6'-0" OR LESS CAN BE CONSIDERED BY THE PLANNING STAFF. CHECK WITH THE PLANNING DIVISION (408-586-3279) FOR SIGN REGULATIONS AND REQUIREMENTS.
4. CHECK WITH THE ENGINEERING DEPARTMENT (408-586-3300) FOR LOCATION OF ANY EASEMENTS, RIGHT OF WAY, AND SIGHT DISTANCE REQUIREMENTS.
5. CHECK WITH THE FIRE DEPARTMENT (408-586-3365) FOR THE CLEARANCE REQUIREMENTS FROM FIRE HYDRANTS, ETC. TYPICALLY, A MINIMUM OF 3 FEET IS REQUIRED FROM FIRE HYDRANT AND 6 FEET IS REQUIRED FROM FIRE DEPARTMENT CONNECTION (FDC) / POST INDICATOR VALVE (PIV) OUTERMOST EXTREMITIES.

REV.	DATE	BY:	SCALE: N.T.S.
1	1/11	BYC	DATE: AUG 2009
2	5/13	BYC	DRAWN BY: BYC
3	1/14	OC	REVIEWED BY: BLDG. STAFF

City of Milpitas
 Building & Safety Department
MONUMENT SIGN
SAMPLE PLOT PLAN

SHEET
1
 OF 4 SHEETS



NOTES:

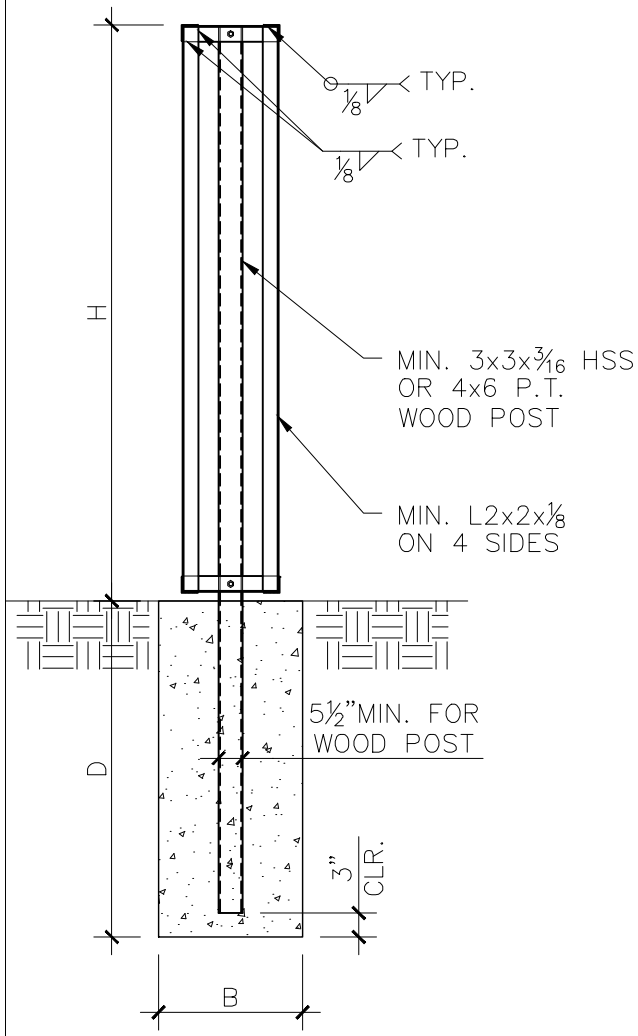
1. INDICATE HEIGHT AND DIMENSIONS OF THE SIGN.
2. SPECIFY IF THE SIGN IS TO BE ILLUMINATED. IF ILLUMINATED, INDICATE THE AVAILABILITY OF (E) JUNCTION BOX NEAR THE SIGN. DIRECT-BURIED CABLES AND CONDUITS SHALL HAVE A MINIMUM 24" COVER WHEN INSTALLED UNDER STREETS, DRIVEWAYS AND PARKING LOTS AND 18" IN ALL OTHER LOCATIONS. (CEC ART.300.5).
3. THE MAX. ALLOWED LIGHTING FOR INTERNALLY ILLUMINATED SIGNS SHALL BE 12 WATTS PER SQUARE FOOT.
4. THE MAX. ALLOWED LIGHTING FOR EXTERNALLY ILLUMINATED SIGNS SHALL BE 2.3 WATTS PER SQUARE FOOT.
5. SHOW THE GRAPHIC DESIGN OF THE SIGN AND SPECIFY THE MATERIALS USED FOR THE SIGN FACE COVER.

MAX. SIGN HEIGHT "H"	MAX. SIGN LENGTH "L"	PIER DIAMETER "B"	MIN. PIER DEPTH "D"
4'	4'	1'	2'-0"
4'	8'	1'	3'-0"
4'	12'	1'	4'-0"
4'	4'	1'-6"	2'-0"
4'	8'	1'-6"	2'-6"
4'	12'	1'-6"	3'-0"
4'	4'	2'	2'-0"
4'	8'	2'	2'-6"
4'	12'	2'	3'-0"
6'	4'	1'	3'-0"
6'	8'	1'	4'-0"
6'	12'	1'	5'-0"
6'	4'	1'-6"	2'-6"
6'	8'	1'-6"	3'-6"
6'	12'	1'-6"	4'-0"
6'	4'	2'	2'-6"
6'	8'	2'	3'-6"
6'	12'	2'	3'-9"
8'	4'	1'	3'-6"
8'	8'	1'	5'-0"
8'	12'	1'	5'-6"
8'	4'	1'-6"	3'-0"
8'	8'	1'-6"	4'-0"
8'	12'	1'-6"	5'-0"
8'	4'	2'	3'-0"
8'	8'	2'	3'-6"
8'	12'	2'	4'-6"

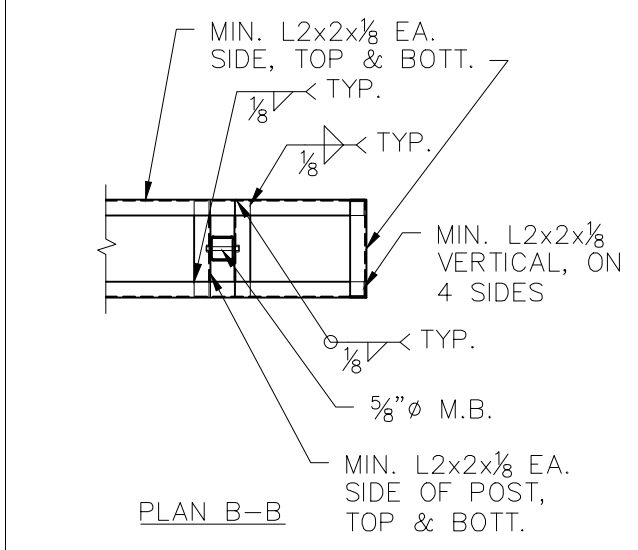
REV.	DATE	BY:	SCALE: N.T.S.
1	1/11	BYC	DATE: AUG 2009
2	5/13	BYC	DRAWN BY: BYC
3	1/14	OC	REVIEWED BY: KI/LS/OC/BK/GA

City of Milpitas
 Building & Safety Department
MONUMENT SIGN
SAMPLE ELEVATIONS

SHEET
2
 OF 4 SHEETS



SECTION A-A



PLAN B-B

NOTES:

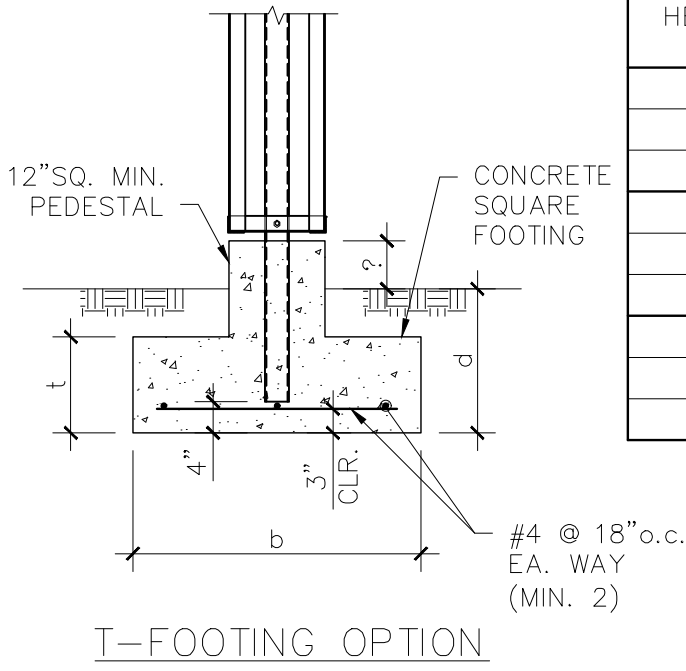
1. MONUMENT SIGN IN HILLSIDE AREAS SHALL BE DESIGNED BY CALIFORNIA LICENSED ARCHITECT OR ENGINEER FOR A 3-SECOND GUST MINIMUM WIND SPEED OF 125 MPH (V_{ult}) AND EXPOSURE C
2. ALL WEATHER EXPOSED STEEL MEMBERS OR FASTENERS SHALL BE HOT DIP GALVANIZED OR STAINLESS STEEL.
3. STEEL TUBES SHALL BE ASTM A500 GRADE B AND STEEL ANGLES SHALL BE ASTM A36. ALTERNATIVELY, ALUMINUM MAY BE USED IN LIEU OF STEEL AND SHALL BE ASTM 6061-T6.
4. WOOD POST SHALL BE PRESSURE TREATED DOUGLAS FIR LARCH NO. 2.
5. ALUMINUM TUBES EMBEDDED IN CONCRETE SHALL BE EFFECTIVELY COATED ON BOTH INSIDE AND OUTSIDE SURFACES WITH PROTECTIVE COATING, SUCH AS EPOXY, TO PREVENT ALUMINUM-CONCRETE REACTION.
6. WHEN ALUMINUM AND STEEL MEMBERS ARE IN CONTACT, PROTECTION SHALL BE PROVIDED BETWEEN THE TWO METALS, SUCH AS EPOXY, TO PREVENT ALUMINUM-STEEL REACTION.
7. WELDING SHALL CONFORM WITH THE LATEST EDITION OF THE AWS SPECIFICATIONS. USE E70 ELECTRODES.
8. CONCRETE COMPRESSIVE STRENGTH SHALL BE 2500 PSI MIN AND REINFORCEMENT YIELD STRENGTH SHALL BE 40 KSI MIN.
9. ANCHOR RODS SHALL BE ASTM F1554 GR. 36.
10. BASEPLATE SHALL BE ASTM A36.
11. ALL STEEL MEMBERS AND FASTENERS IN CONTACT WITH PRESSURE TREATED WOOD SHALL BE HOT-DIP GALVANIZED OR STAINLESS STEEL.
12. ALL ALUMINUM MEMBERS AND FASTENERS IN CONTACT WITH PRESSURE TREATED WOOD SHALL BE COATED WITH PROTECTIVE COATING, SUCH AS EPOXY, TO PREVENT DIRECT CONTACT.
13. THE INFORMATION PROVIDED IN THIS DESIGN GUIDE CARRIES NO IMPLIED OR INFERRED GUARANTEE AGAINST FAILURE OR DEFECTS. BY USING THIS DESIGN GUIDE, THE CONTRACTOR/OWNER ACCEPTS THE FULL RESPONSIBILITY OF RISK. ALTERNATE DESIGN MAY BE USED WHEN PROVIDED WITH WET STAMPED AND SIGNED STRUCTURAL CALCULATIONS & DETAILS BY A CALIFORNIA LICENSED ENGINEER OR ARCHITECT.

REV.	DATE	BY:	SCALE: N.T.S.
1	1/11	BYC	DATE: AUG 2009
2	5/13	BYC	DRAWN BY: BYC
3	1/14	OC	REVIEWED BY: KI/LS/OC/BK/GA
4	3/17	JC	

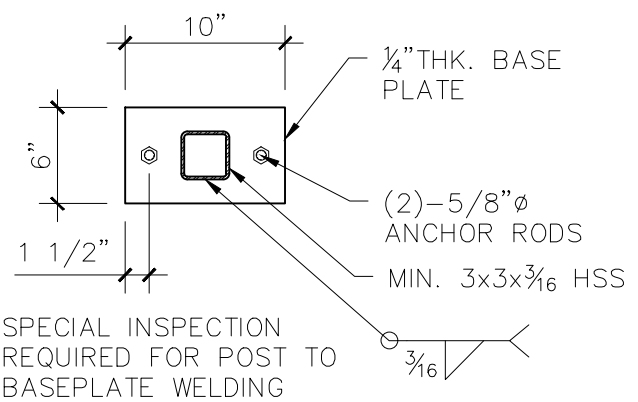
City of Milpitas
 Building & Safety Department
MONUMENT SIGN
SAMPLE SECTIONS AND DETAILS

SHEET
3
OF 4 SHEETS

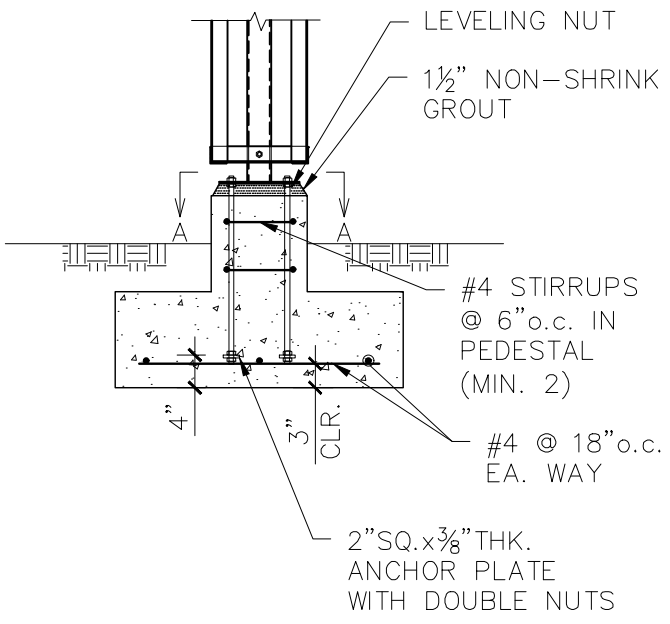
MAX. SIGN HEIGHT "H"	MAX. SIGN LENGTH "L"	MIN. FTG. DEPTH "d"	MIN. FTG. SIZE "b"	MIN. FTG. THICKNESS "t"
4'	4'	1'-6"	2'-0"	1'-0"
4'	8'	1'-6"	2'-9"	1'-0"
4'	12'	1'-6"	3'-0"	1'-0"
6'	4'	1'-6"	2'-9"	1'-0"
6'	8'	2'-6"	3'-0"	1'-6"
6'	12'	2'-6"	3'-6"	1'-6"
8'	4'	1'-6"	3'-3"	1'-0"
8'	8'	2'-6"	4'-0"	1'-6"
8'	12'	2'-6"	4'-6"	1'-6"



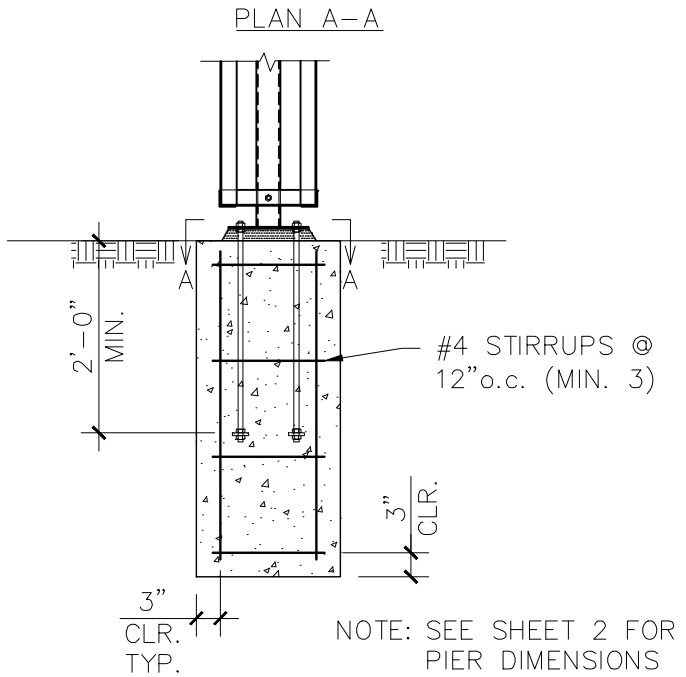
T-FOOTING OPTION



NOTE: SPECIAL INSPECTION REQUIRED FOR POST TO BASEPLATE WELDING



BASE CONNECTION OPTION AT T-FOOTING



BASE CONNECTION OPTION AT PIER FOOTING

REV.	DATE	BY:	SCALE: N.T.S.
1	1/11	BYC	DATE: AUG 2009
2	5/13	BYC	DRAWN BY: BYC
3	1/14	OC	REVIEWED BY: KI/LS/OC/BK/GA

City of Milpitas
 Building & Safety Department
 MONUMENT SIGN
 SAMPLE FOUNDATION OPTIONS



CITY OF MILPITAS

BUILDING AND SAFETY DEPARTMENT

455 East Calaveras Boulevard, Milpitas, CA 95035-5479 – Tel. 408.586.3240, Fax 408.586.3285

www.ci.milpitas.ca.gov

CITY OF MILPITAS DISCLAIMER

The City of Milpitas has provided design guidelines to the public for informational purposes. These guidelines are sufficient to meet the Building Code requirements and obtain a City permit. However, the guidelines were drafted to fit generic design and building conditions, not project specific conditions.

I, the undersign, expressly acknowledge and agree that any and all use of the City of Milpitas Building & Safety Department Design Guidelines is at my sole risk. Neither the City of Milpitas nor any of its respective employees, agents, or officials warrant that access to and use of the Guidelines will be free from failure or defects. Nor does the City of Milpitas offer any warranty for the results that may be obtained from using the Guidelines or for the accuracy, reliability or design of any information provided by the Guidelines.

Print Name

Company

Signature

Plan Check No.

Date