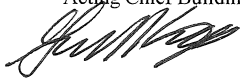




**City of Milpitas  
Building and Safety Department**

Mailing Address: 455 East Calaveras Boulevard, Milpitas, California  
95035-5479 – Tel. 408.586.3240, Fax 408.586.3285 [www.ci.milpitas.ca.gov](http://www.ci.milpitas.ca.gov)

**Offices and Restrooms in Stockrooms  
in Group M Occupancies**

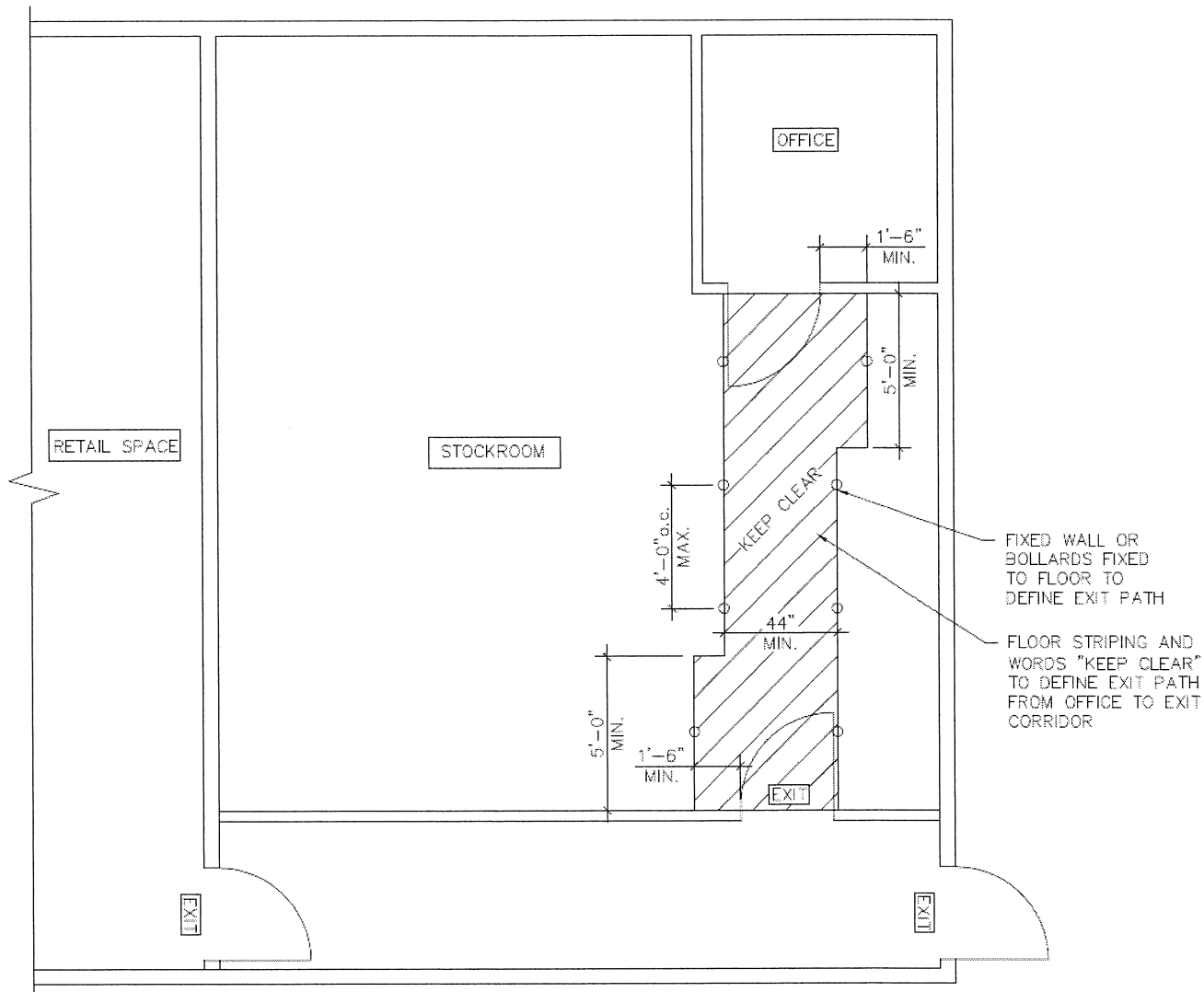
<b>Policy:</b>	<b>BDP-BLG30</b>
Effective Date:	July 8, 2011
Proposed by:	BYC
Last Reviewed/ Revised:	5/12/17
Revised by:	BYC
Approved By: Gary King Acting Chief Building Official 	

**CODE REFERENCE:**

1. Per 2016 CBC sec. 1016.2 Item 4, egress shall not pass through kitchens, storage rooms, closets or spaces used for similar purposes. Exception 2 permits egress through stockroom in Group M occupancies provided all the conditions in the exception are met.
2. Accessible clear width shall be in compliance with 2016 CBC sec. 11B-403.5.1.
3. Per 2016 CBC sec. 202, accessible route of travel shall be continuous unobstructed path connecting accessible elements and spaces.

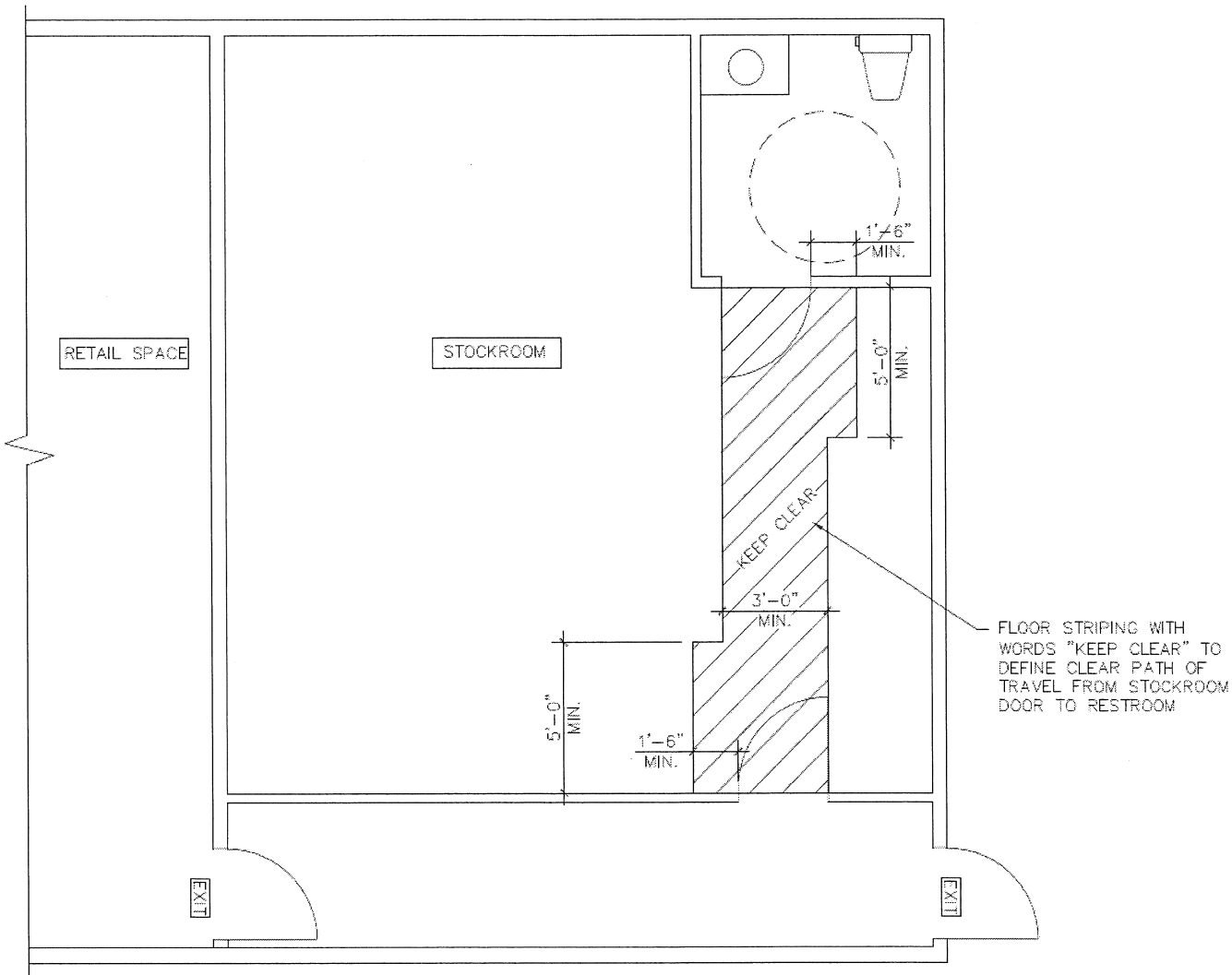
**POLICY:**

1. Offices located inside stockrooms in retail stores are permitted provided that all the conditions stated in Exception 2 in 2016 CBC sec. 1016.2 Item 4 are met. When bollards are used to demarcate exit path, the spacing shall not exceed 4'-0" o.c. and the exit path shall be striped with min. 44" clear width and the maneuvering clearance in front of the two doors as required in 2016 CBC sec. 11B-404.2.4. The words "KEEP CLEAR" shall be painted on the striped path. See attached Sketch 1.
2. Restrooms located inside stockrooms in retail stores are permitted provided that the path of travel from the stockroom entrance door to the restroom door shall be striped with min. 36" clear width and the maneuvering clearance in front of the two doors as required in 2016 CBC sec. 11B-404.2.4. The words "KEEP CLEAR" shall be painted on the striped path. See attached Sketch 1.



1 OFFICE IN STOCKROOM

SCALE: N.T.S.



FLOOR STRIPING WITH WORDS "KEEP CLEAR" TO DEFINE CLEAR PATH OF TRAVEL FROM STOCKROOM DOOR TO RESTROOM

2

RESTROOM IN STOCKROOM

SCALE: N.T.S.