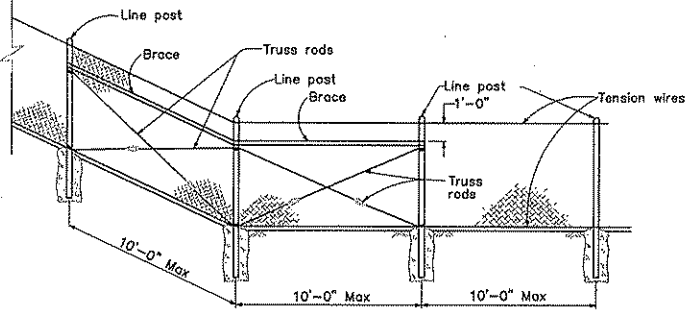
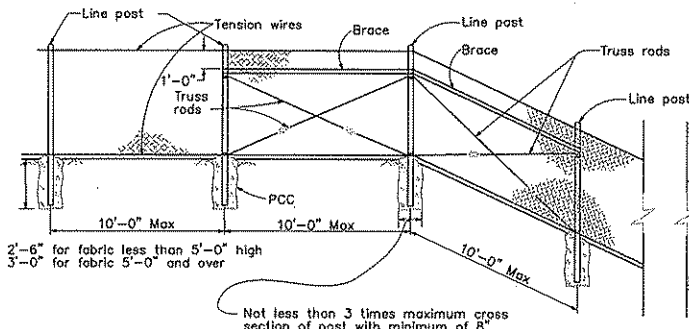
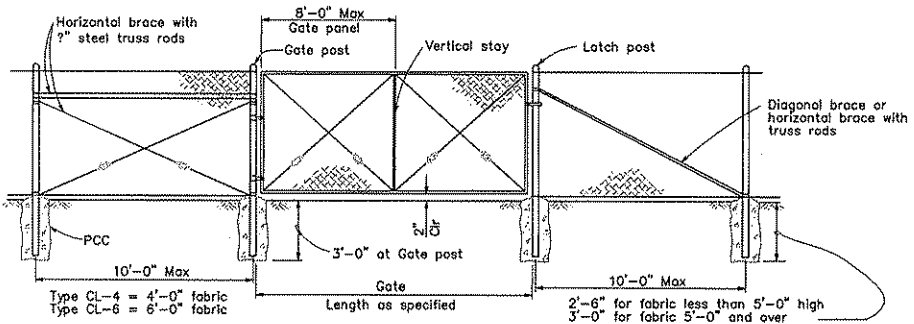
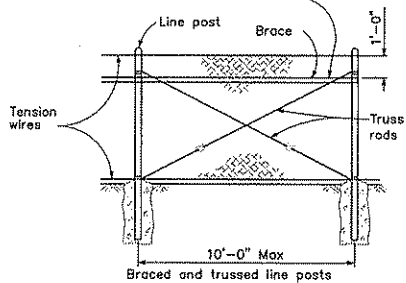


NOT TO SCALE

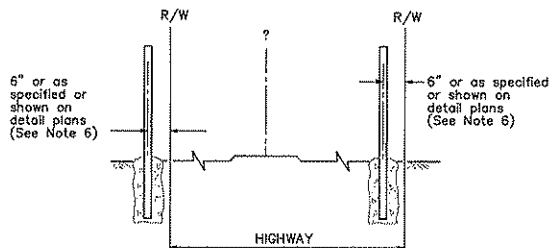


CHAIN LINK FENCE ON SHARP BREAK IN GRADE

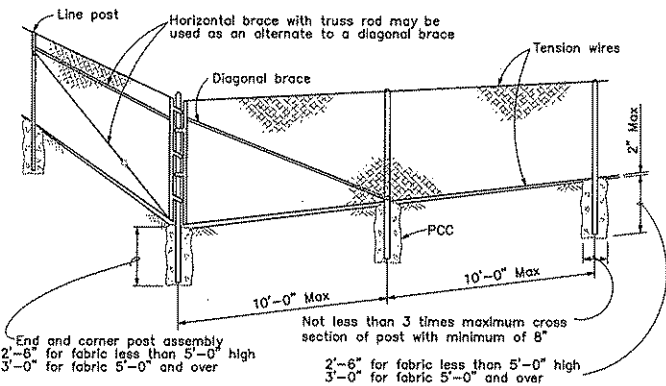
Brace to be removed after all other fence construction is completed unless otherwise directed by the Engineer



CHAIN LINK GATE INSTALLATION



**OTHER HIGHWAYS
FREEWAYS
FENCE LOCATION**



CORNER POST

GATE POST			
FENCE HEIGHT	GATE WIDTHS	NOMINAL ID	WEIGHT PER FOOT
6'-0" and Less	Up thru 6'-0"	2?"	4.95 LB
	Over 6'-0" thru 12'-0"	4"	10.79 LB
	Over 12'-0" thru 18'-0"	5"	14.62 LB
	Over 18'-0" to 24'-0" Max	6"	18.97 LB
Over 6'-0"	Up thru 6'-0"	3"	7.58 LB
	Over 6'-0" thru 12'-0"	5"	14.62 LB
	Over 12'-0" thru 18'-0"	6"	18.97 LB
	Over 18'-0" to 24'-0" Max	8"	28.55 LB

Above post dimensions and weights are minimums. Larger sizes may be used on approval of the Engineer.

NOTES:

- The below table shows examples of post and brace sections which may comply with the Specifications.
- Sections shown in the tables must also comply with the strength requirements and other provisions of the Specifications.
- Other sections which comply with the strength requirements and other provisions of the Specifications may be used on approval of the Engineer.
- Options exercised shall be uniform on any one project.
- Dimensions shown are nominal.
- Offset to be 2'-0" at monument locations, measured at right angles to R/W lines. Taper to achieve offset to be at least 20'-0" long.

TYPICAL MEMBER DIMENSIONS (See Notes)

FENCE HEIGHT	LINE POSTS			END, LATCH & CORNER POSTS			BRACES			
	ROUND ID	H	ROLL FORMED	ROUND ID	ROLL FORMED		ROUND ID	H	ROLL FORMED	
					□	□			□	□
6' & less	1?"	1?" x 1?"	1?" x 1?"	2"	3?" x 3?"	2" x 1?"	1?"	1?" x 1?"	1?" x 1?"	1?" x 1?"
Over 6'	2"	2?" x 2"	2" x 1?"	2?"	3?" x 3?"	2?" x 2?"	1?"	1?" x 1?"	1?" x 1?"	1?" x 1?"

CITY OF MILPITAS, ENGINEERING DIVISION

**STANDARD DRAWING
NO. 212**

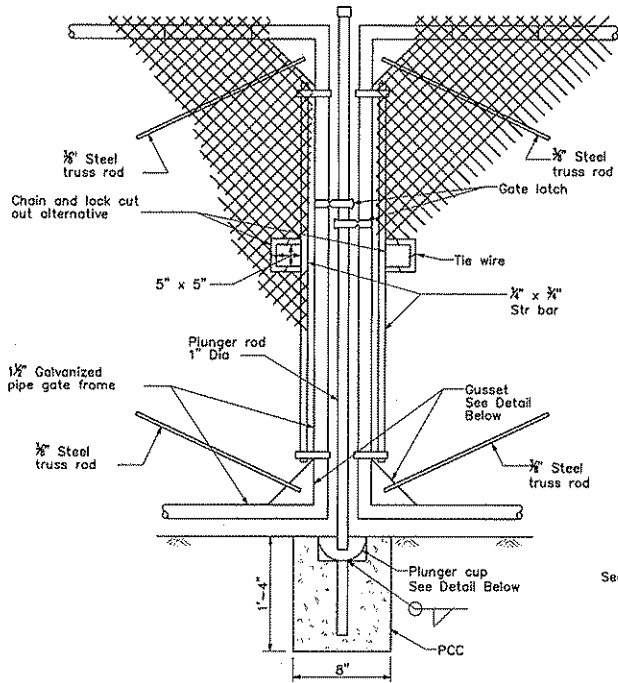
CHAIN LINK FENCE

DATE : 6/15/10

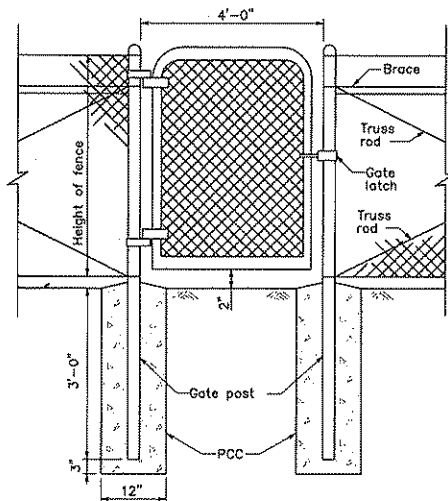
REVISION	DATE
1	1974
2	2001
3	2010

APPROVED BY: PUBLIC WORKS DIRECTOR / CITY ENGINEER RCE No. 40283

SHEET 1 OF 3



**TYPICAL DOUBLE GATE
REMOVABLE CENTER POST**

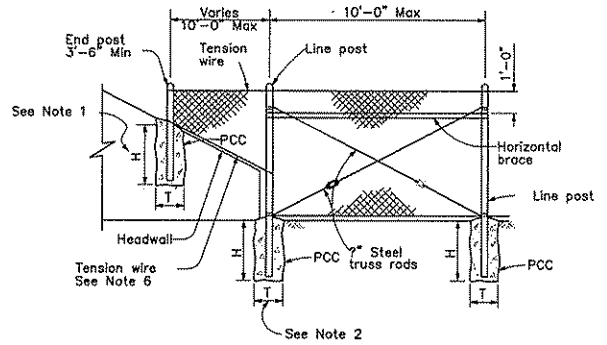


WALK GATE

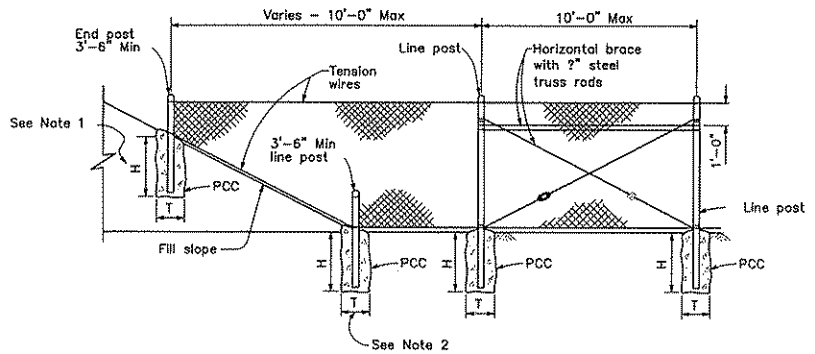
NOTES:

1. H is 2'-6" for fabric less than 5'-0" high.
H is 3'-0" for fabric 5'-0" and over.
2. T is not less than 3 times maximum cross section of post with minimum of 8".
3. See Revised Standard Plan RSP A85 for Chain Link Fencing dimensions.
4. Reinforcing must comply with ASTM A 706.
5. See Detail A on New Standard Plan NSP A86B for connection of headwall.

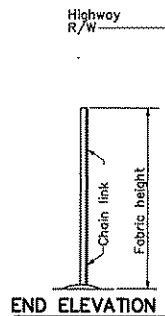
NOT TO SCALE



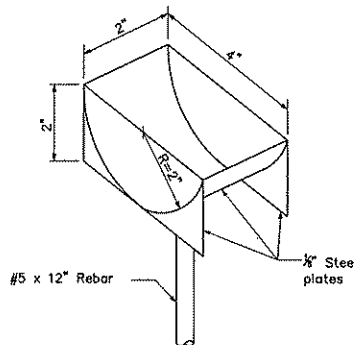
METHOD OF TYING FENCE TO HEADWALL



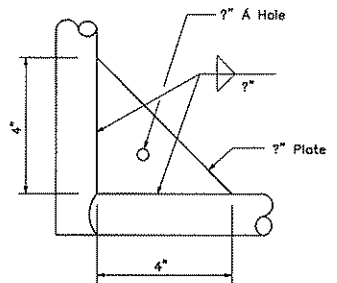
METHOD OF ERECTING FENCE FOR FILL SLOPE



END ELEVATION



PLUNGER CUP DETAIL



GUSSET DETAIL

CITY OF MILPITAS, ENGINEERING DIVISION

STANDARD DRAWING

NO. 212

CHAIN LINK FENCE DETAILS

DATE : 6/15/10

REVISION

DATE

1

1974

2

2001

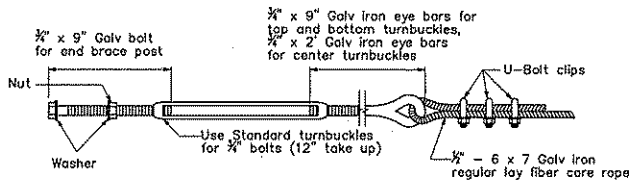
3

2010

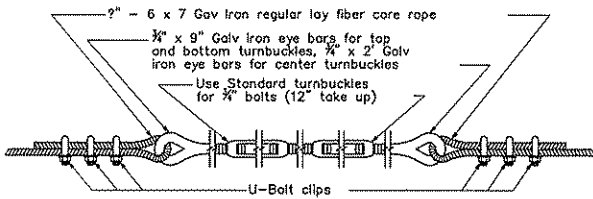
APPROVED BY:

PUBLIC WORKS DIRECTOR / CITY ENGINEER RCE No. 40283

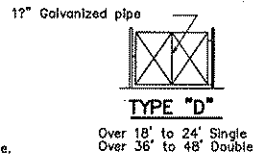
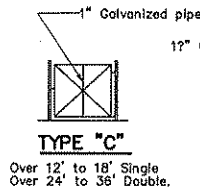
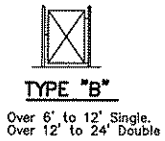
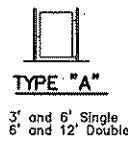
SHEET 2 OF 3



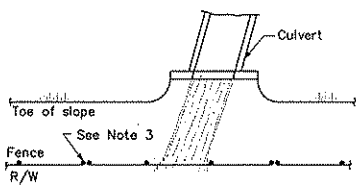
TURNBUCKLE A



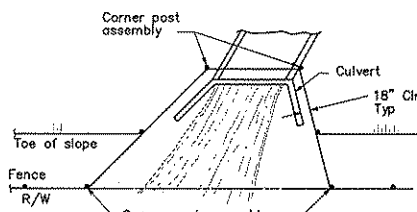
TURNBUCKLE B



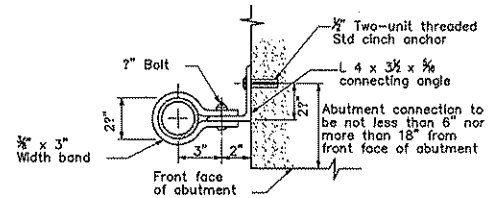
TYPICAL FRAMEWORK SHOWING NUMBER OF BAYS IN GATE



PLAN

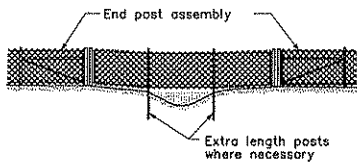


PLAN



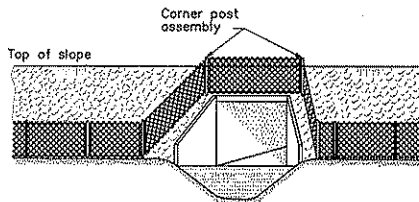
ABUTMENT CONNECTION

TYPICAL INSTALLATION AT BRIDGES



ELEVATION

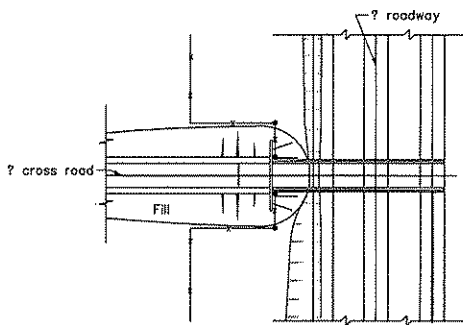
INSTALLATION OVER STREAM



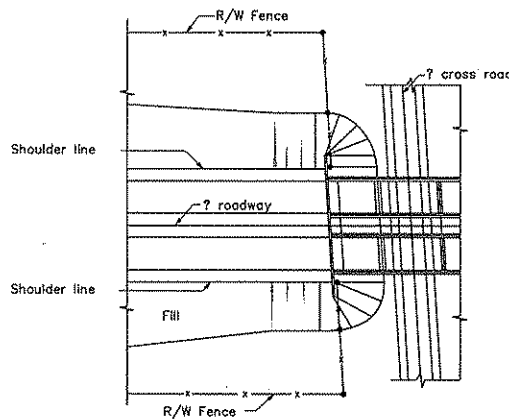
ELEVATION

INSTALLATION AROUND HEADWALL

See Note 4



PLAN OF ROADWAY - UNDERPASS



PLAN OF ROADWAY - OVERPASS

NOTES:

1. All material for abutment connection to be galvanized.
2. The chain link fabric shall be replaced by barbed wire strands at 12" maximum centers between the double posts.
3. When the width of the culvert makes it necessary to anchor a post to the top of the culvert, a cast iron shoe or other device approved by the Engineer shall be used.
4. Fencing over stream and around headwall may also use Barbed Wire or Wire Mesh fencing with either wood post or steel post installation.
5. See Revised Standard Plan RSP A85 for Chain Link fence dimensions. See Standard Plan A86 for Barbed Wire and Wire Mesh fence dimensions and for wood post and steel post installation.

NOT TO SCALE

CITY OF MILPITAS, ENGINEERING DIVISION

STANDARD DRAWING

NO. 212

CHAIN LINK FENCE DETAILS

DATE : 6/15/10

REVISION

DATE

1

1974

2

2001

3

2010

3

APPROVED BY:

PUBLIC WORKS DIRECTOR / CITY ENGINEER RCE No. 40283

SHEET 3 OF 3