

TYPICAL TRAFFIC SIGNAL CABINET/ SERVICE PEDESTAL INSTALLATION DETAIL

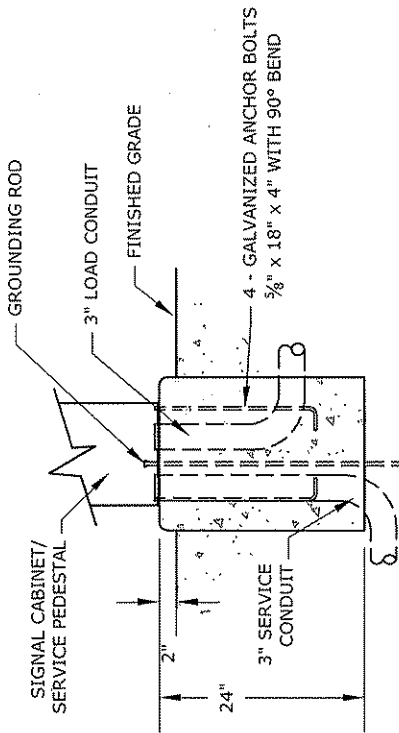
GENERAL:

Signals:

1. Traffic signal installation and modification shall conform to Caltrans Standard Plans and Standard Specifications dated May 2006.
2. The order of precedence for traffic signal and street light design standards shall be City's adopted specific plan, City Standard Drawings, Caltrans Standard plans, and Caltrans Standard Specifications.

Street Lights:

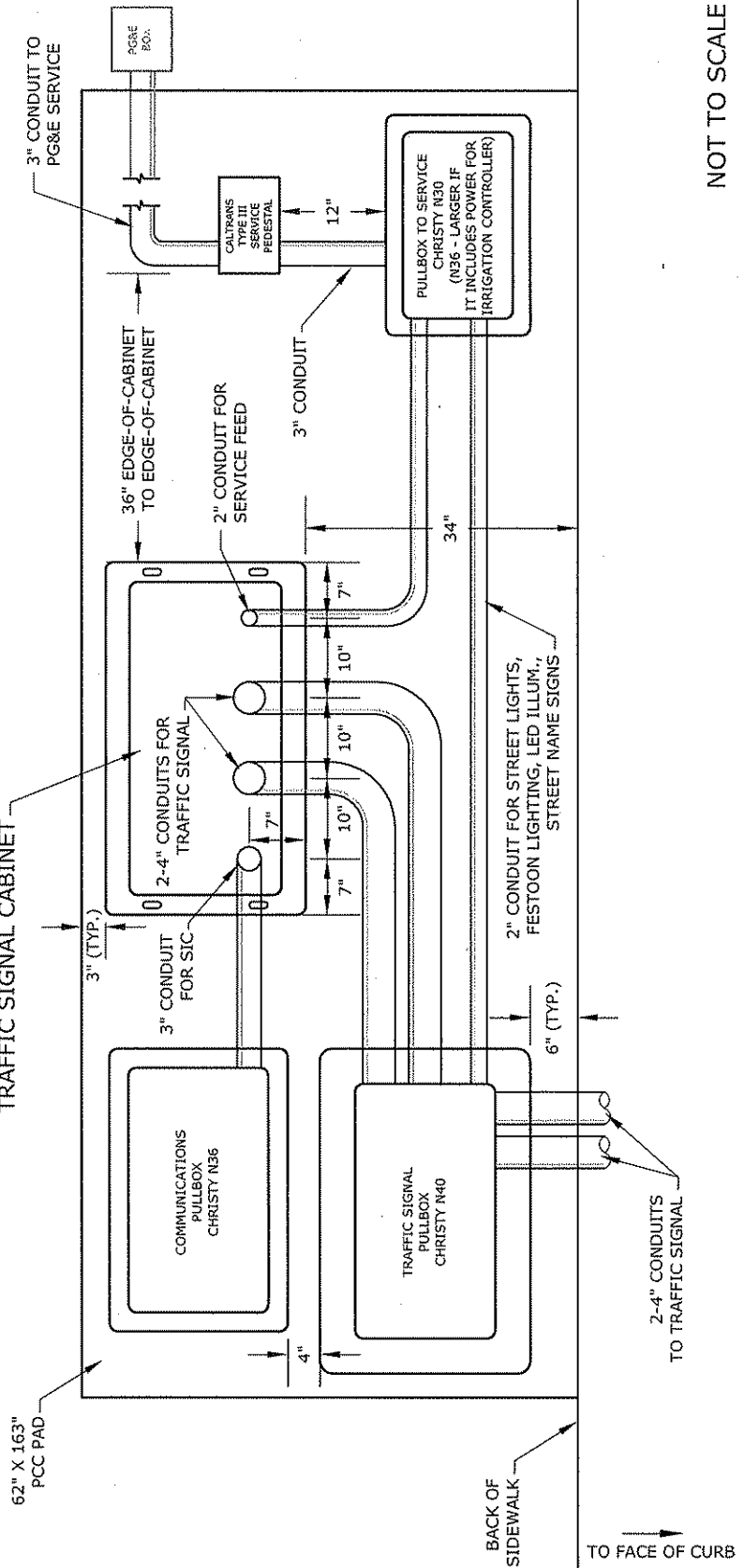
1. Light Emit Diode (LED) or other high efficient light fixtures shall be used within the Transit Area Specific Plan Zone.
2. Street light shall conform to the Standard Drawings unless within the adopted Transit Area Specific Plan Zone and Midtown Specific Plan Zone.



**ELEVATION VIEW
CONCRETE PEDESTAL FOUNDATION**

RIGHT OF WAY

**TYPE P NEMA TS2-2
TRAFFIC SIGNAL CABINET**



NOT TO SCALE


CITY OF MILPITAS, ENGINEERING DIVISION

STANDARD DRAWING

REVISION	DATE	DESIGNED: FB
		DRAWN: NF
		CHECKED: FB

**TRAFFIC SIGNAL CABINET & SERVICE
PEDESTAL INSTALLATION DETAIL**

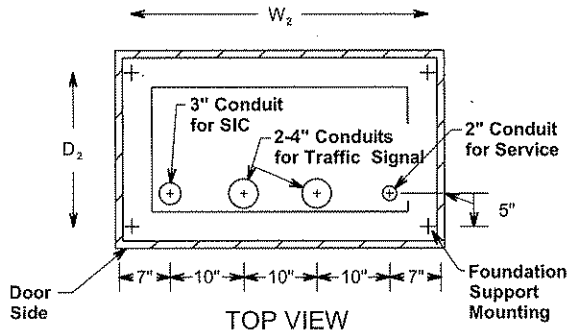
NO. 440

APPROVED BY: 
 PUBLIC WORKS DIRECTOR / CITY ENGINEER DATE: 5/1/10

DATE: 6/15/10

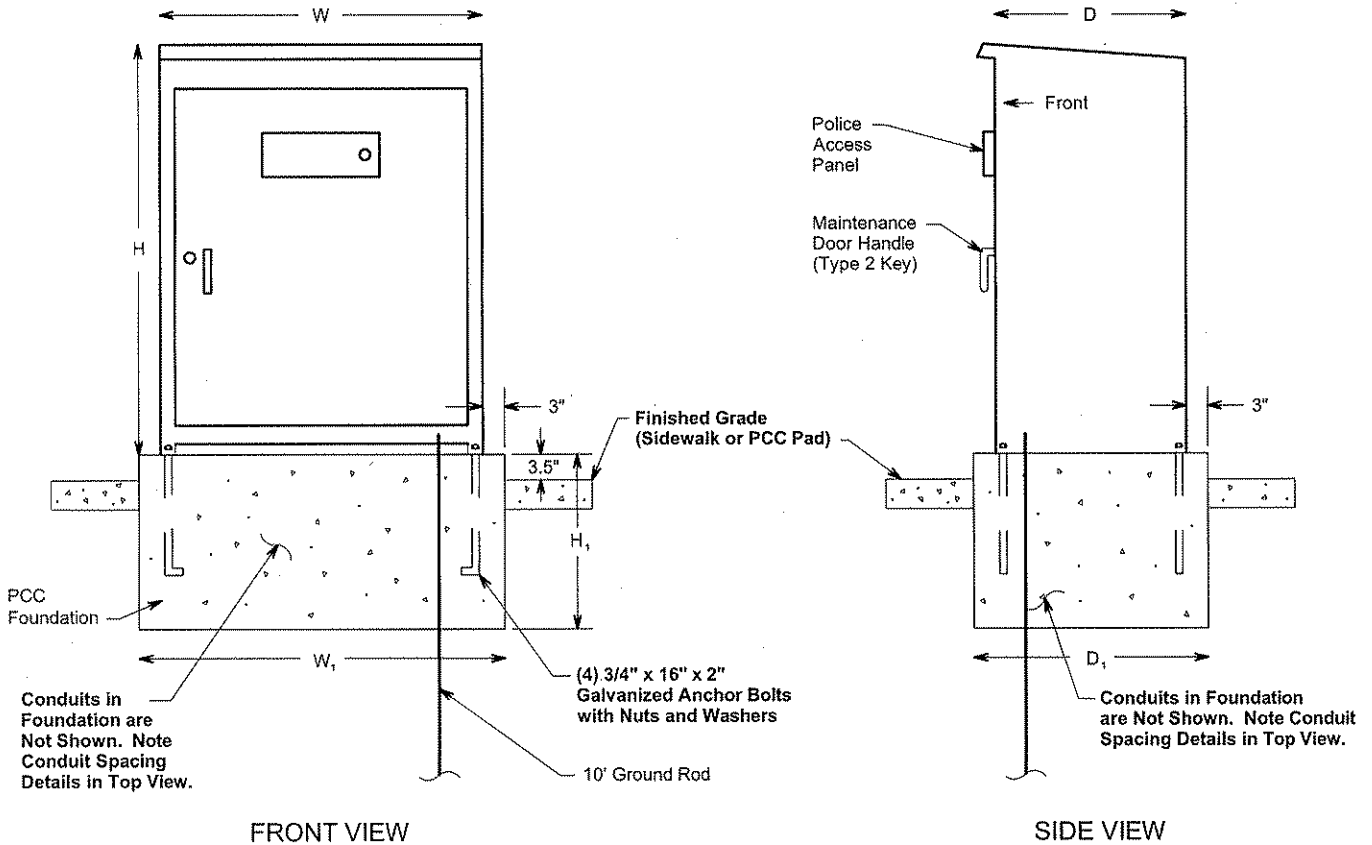
SHEET 1 OF 3

Type P Traffic Signal Cabinet Dimensions



CABINET			FOUNDATION			BOLT MOUNTING		
H*	W	D	H ₁	W ₁	D ₁		W ₂	D ₂
55 9/16"	44"	26"	24"	50"	32"			40 1/2"

* ADDITIONAL 12-INCH RISER (NOT SHOWN) MAY BE REQUIRED IF SPECIFIED ON PROJECT PLANS.



NOTES

1. TRAFFIC SIGNAL CABINET SHALL BE NEMA TYPE 2-2.
2. EXACT LOCATION OF CONTROLLER CABINET SHALL BE DETERMINED BY THE PROJECT ENGINEER.
3. TRAFFIC SIGNAL CABINET SHALL BE DARK GREEN COLOR AS MANUFACTURED BY CARDINAL PAINT COMPANY, COLOR NO. T007-GN16-POWDER.
4. A 12-INCH CABINET EXTENSION (NOT SHOWN) MAY BE REQUIRED IF SPECIFIED ON PROJECT PLANS. CABINET EXTENSION SHALL BE SAME COLOR AS CABINET.

NOT TO SCALE

CITY OF MILPITAS, ENGINEERING DIVISION

STANDARD DRAWING

TRAFFIC SIGNAL CONTROL CABINET &
FOUNDATION DETAIL

NO. 440

REVISION	DATE
1	2007
2	2010

2007

2010

DATE : 6/15/10

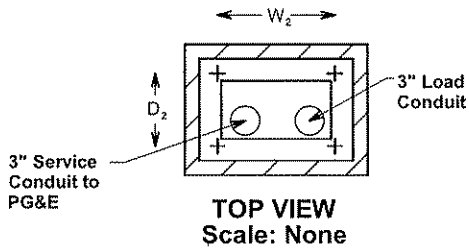
2

APPROVED BY:

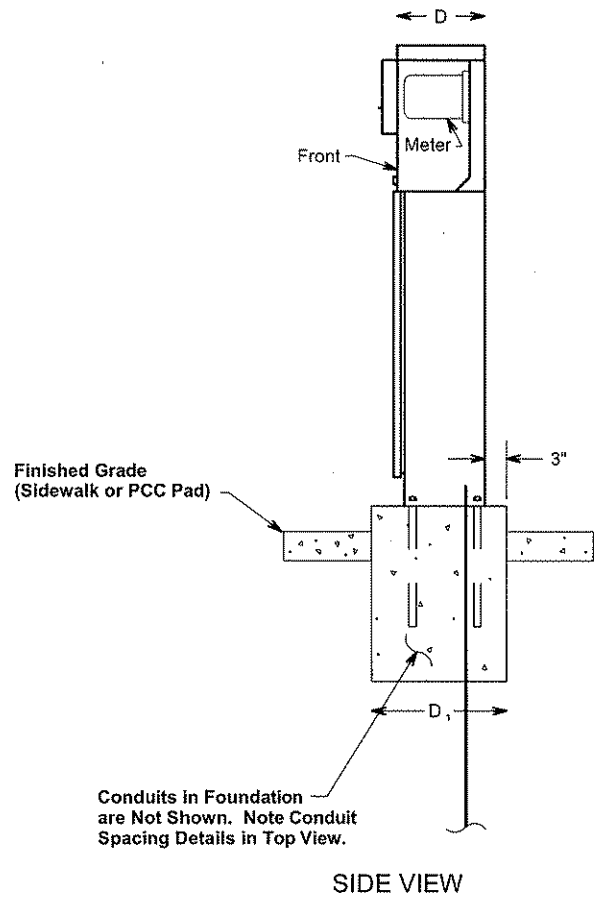
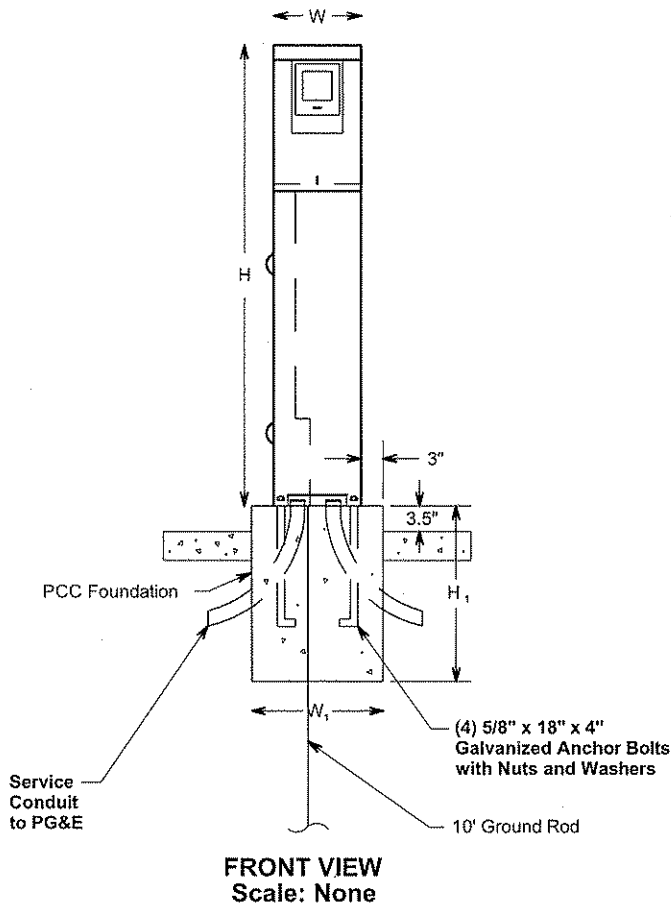
PUBLIC WORKS DIRECTOR / CITY ENGINEER - RCE NO. 40283

SHEET 2 OF 3

Type IIIAF Service Pedestal Dimensions



CABINET			FOUNDATION			BOLT MOUNTING		
H	W	D	H ₁	W ₁	D ₁		W ₂	D ₂
63 1/8"	12 1/8"	8"	24"	18"	14"		8"	5 1/4"



NOTES

1. TYPE IIIAF SERVICE PEDESTAL SHALL BE MANUFACTURED BY TESCO CONTROLS, OR APPROVED EQUAL.
2. EXACT LOCATION OF SERVICE PEDESTAL SHALL BE DETERMINED BY THE PROJECT ENGINEER.
SERVICE PEDESTAL SHALL BE DARK GREEN COLOR AS MANUFACTURED BY CARDINAL PAINT COMPANY,
3. COLOR NO. T007-GN16-POWDER.

NOT TO SCALE

CITY OF MILPITAS, ENGINEERING DIVISION			STANDARD DRAWING NO. 440
REVISION	DATE	ELECTRICAL SERVICE PEDESTAL & FOUNDATION DETAIL	
1	2007		DATE : 6/15/10
2	2010		SHEET 3 OF 3
APPROVED BY:			
PUBLIC WORKS DIRECTOR / CITY ENGINEER RCE No. 40283			